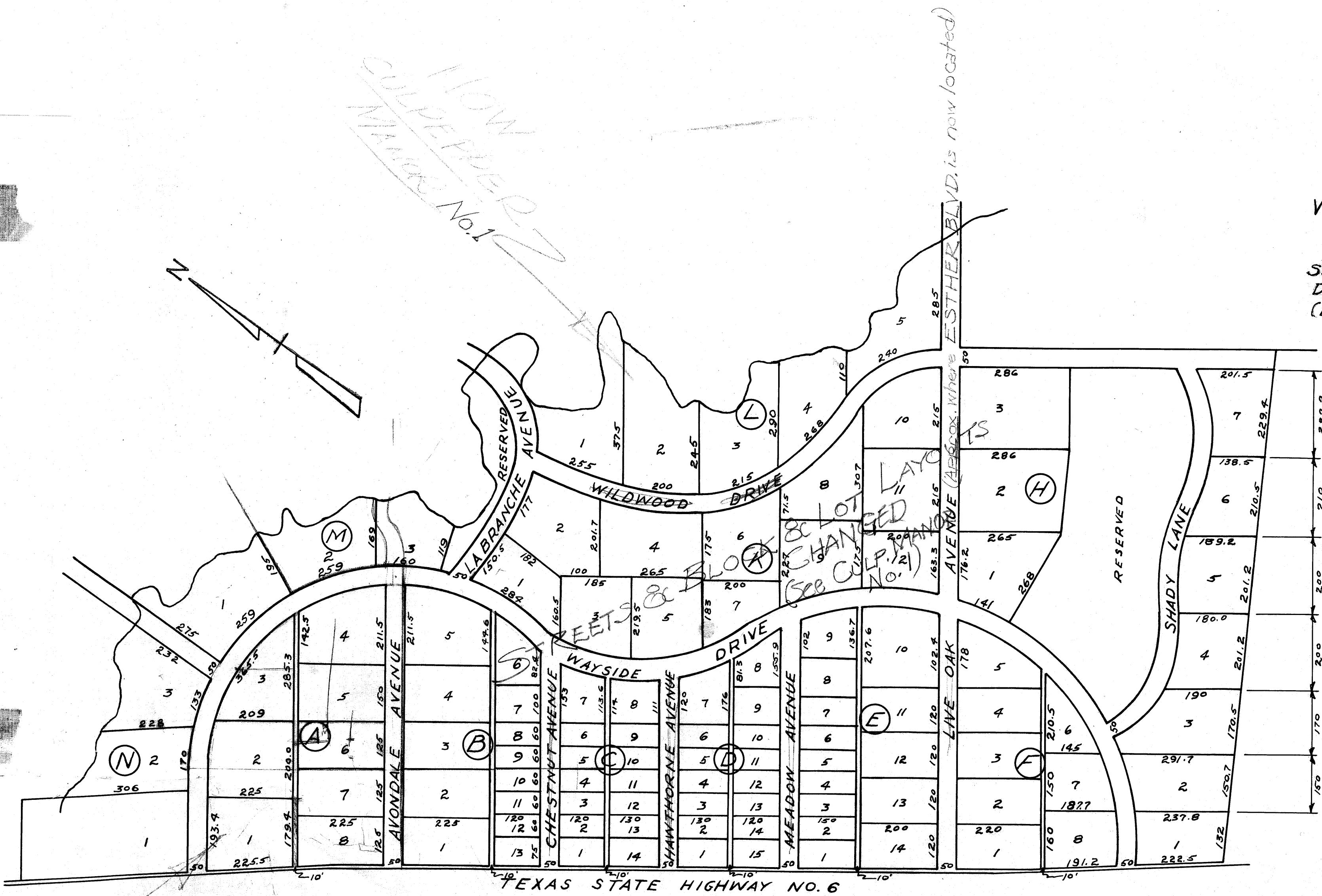


CAVITT'S
 WOODLAND HEIGHTS
 D.R. 91 Pg. 588 1-9-'36
 Scale: 1" = 200'
 See D.R. 169, Pg. 626, 8-27-55, for
 Declaration of Vacation & Abandonment
 (Revised as CULPEPPER MANOR NO. D
 (EXCEPT BLOCKS A, N, and Part of M))

NOW
 CULPEPPER
 MANOR No. 1

ESTHER BLVD. is now located



Area West of Red Lines
 Retained as CAVITT'S WOODLAND HEIGHTS

on balance
 to
 rights